

Gravity Digital RGB LED Module

DFR0605

Product Overview

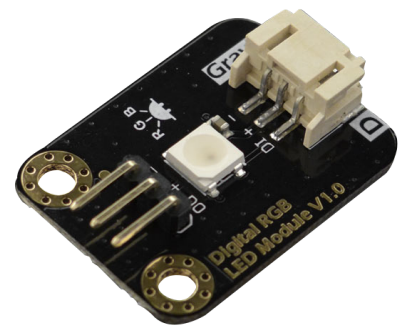
07/25/2022

For the most up-to-date information, visit www.mouser.com or the supplier's website.

Description

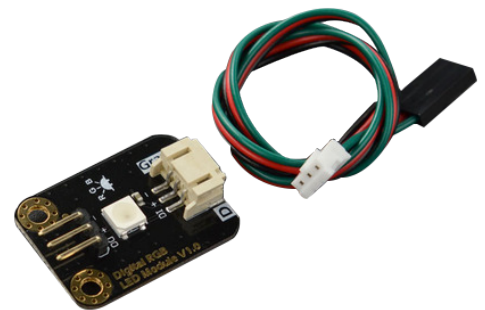
DFRobot Gravity Digital RGB LED Module is a single cascable LED module with an RGB LED strip. This module provides connections between modules and Arduino, micro: bit, Firebeetle series, LattePanda, and Raspberry Pi mainstream controllers.

The Gravity LED module requires only one signal pin for all the cascaded LEDs. This module consumes very little power per meter, enabling more than 100 modules to cascade. The Gravity LED module allows a simple and flexible configuration of the length of an RGB LED strip without the need for cutting or soldering.



Features

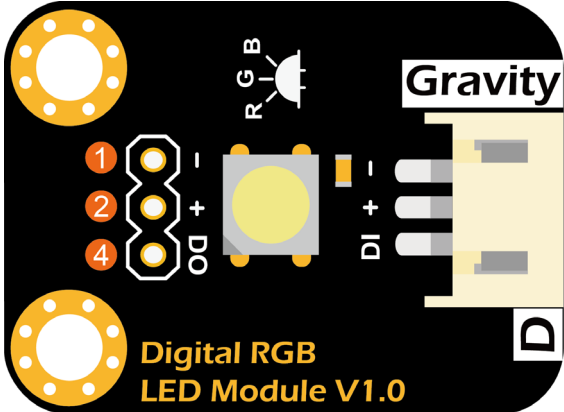
- Good display performance and high-quality brightness
- Low cascading length and low unit power consumption
- High compatibility
- Compatible with 3.3V or 5V controller and RGB LED strip drivers or programs
- A standard connector that is easy to set up without cutting or soldering



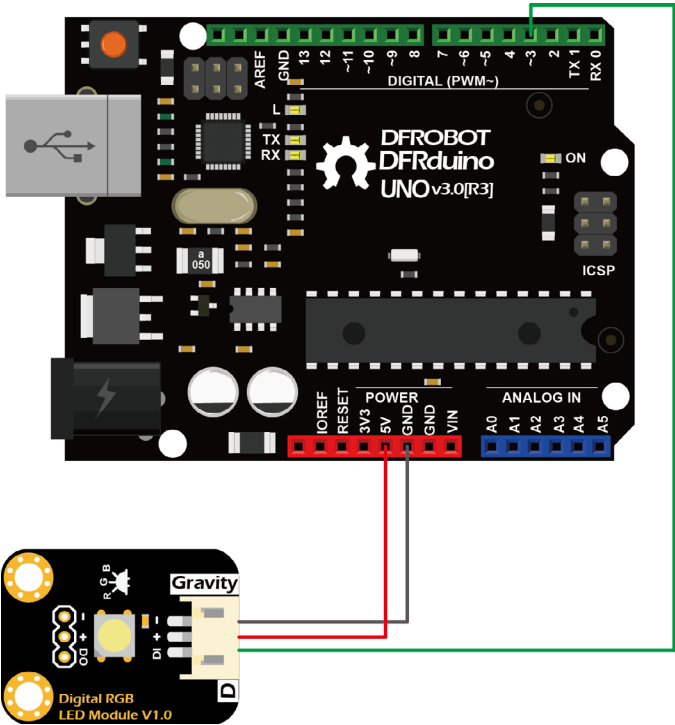
Specifications

- WS2812 RGB 5050 LED
- 3.3V to 5V input voltage range
- 48mA maximum current
- 0.7mA quiescent current
- Gravity 3P digital interface
- 30mm x 22mm dimensions

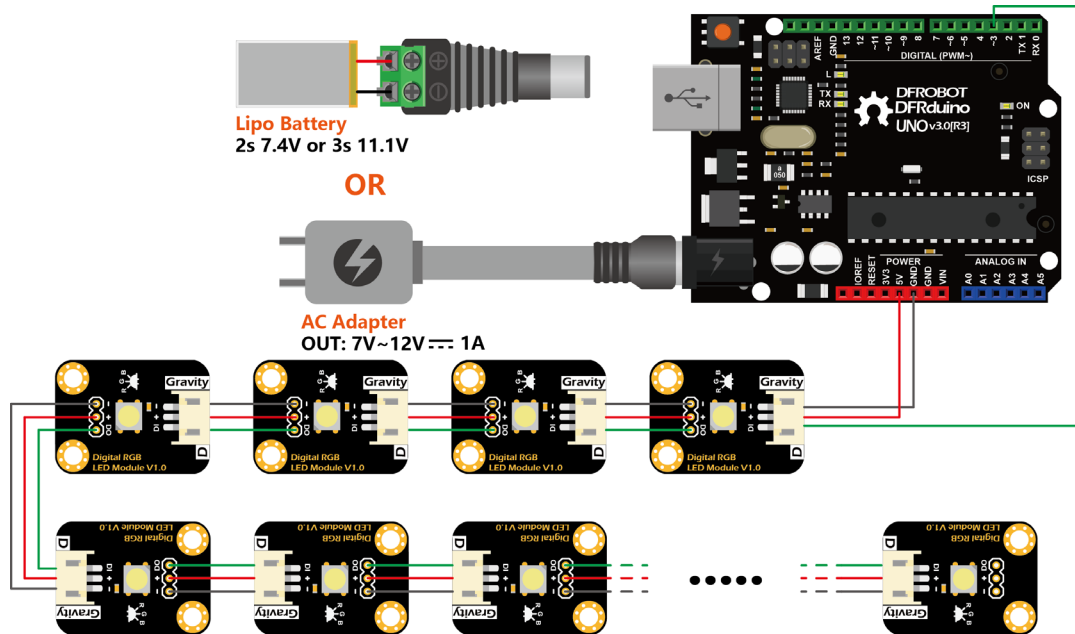
Board Overview



Connection Diagram



Cascading Overview



Schematic

[Gravity Module Schematic](#)

Learn More About

<https://www.mouser.com/new/dfrobot/dfrobot-gravity/>

Mouser Part Number

[View Part](#)

To learn more, visit <https://www.mouser.com/new/dfrobot/dfrobot-gravity-rgb-led-module/>